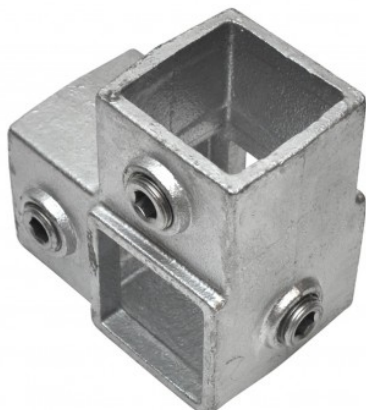


Angle of continuous upright Typ 20S, 40 mm, Galvanized



link to the product:

<https://dev.tubefittings.eu/en/square-tubefittings/396-corner-middle-rail-type-20s-40-5901138375600.html>

Price: **€16.49** gross

Manufacturer: Klempe

Referention number: 608020S-40

Information:

Angle of continuous upright - 40 mm. Corner connection (90°), where the vertical tube runs through the clamp.

The size of the discount

Quantity	Discount	Spare
20	5%	above €16.49
40	7.5%	above €49.47
60	10%	above €98.94
80	15%	above €197.88

Product features

Dedicated outer tube diameter (mm)	40x40 mm
Type symbol	Typ 20S
Material	Cast iron (ASTM A47 Grade 32510)
Coating	Hot-dip galvanized
TÜV	TÜV certified
Weight	0,69
Number of Pieces in Collective Packaging	28
Type	Corner piece
Screw Material	Carbon steel ML08AL with Magni 565 coating
Screw Thread Type	BSP thread (ISO228/1)
Screw Size	3/8" x 12,7 mm
Diameter system	Nominal Pipe Size (NPS / BSP) - Indicates the matching outer tube diameter. The connector's actual internal diameter is larger to allow for installation and set screw tightening.