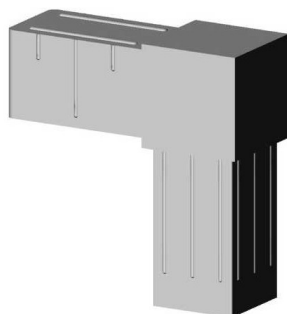


90° Elbow (2 axes, 2 slots) - for profile 20x20x1.5 mm - grey



link to the product:

<https://dev.tubefittings.eu/en/plastic-connectors-for-square-profiles/4900-elbow-90-2axes-2slots-20x20x15-grey-5907291158722.html>

Price: **€2.00** gross

Manufacturer: Klemm

Referention number: 2D2-V20-X1-5-S

Information:

The 90° elbow - 2 axes - 2 sockets - 2D2 V20 X1.5 S is a standard plastic structural connector for profiles measuring 20x20x1.5 mm. Made from PA6 nylon reinforced with fiberglass, it offers high durability and resistance to mechanical damage. It features two axes and two sockets, allowing for stable and precise connections between components. Designed for profiles with a wall thickness of 2 mm, its gray color ensures aesthetic integration with various constructions. Weight: 0.019 kg. Product dimensions - B: 20 mm; B1: 16.8 mm; L: 16.8 mm; L1: 20 mm

The size of the discount

Quantity	Discount	Spare
10	2%	above €0.40
20	5%	above €2.00
100	15%	above €30.00
500	20%	above €200.00
1000	30%	above €600.00

Product features

Material	Polyamide PA6 - glass fiber reinforced
Colour	Grey Matt
Type	Elbow
Mounting method	By plug, using a rubber hammer
Matching profile	20x20x1,5 mm
Number of axes	2
Number of slots	2
Core	Standard plastic connectors