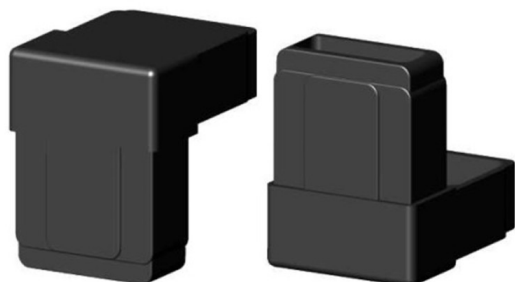


## 90° Elbow (2 axes, 2 slots) - for tube 50x30x2 mm - black



link to the product:

<https://dev.tubefittings.eu/en/plastic-connectors-for-rectangular-profiles/5107-90-elbow-2-axes-2-slots-for-tube-50x30x2-mm-black-5901421017255.html>

Price: **€2.00** gross

Manufacturer: Klempl

Referention number: 2D2-V50X30-X2-C

### Information:

Elbow joint (2 axes, 2 sockets) for 50x30x2 mm tube is a durable connector for frameworks, frames, and lightweight aluminum structures. Polyamide PA6 reinforced with glass fiber ensures longevity, and installation by press-fitting with a rubber mallet is quick and easy. Standard plastic connectors guarantee stable and precise joints. The black color suits modern designs. Perfect for industrial and hobbyist constructions.

Dimensions: A = 50 mm; B = 30 mm; C = 2 mm; E = 49 mm

### The size of the discount

Quantity	Discount	Spare
10	2%	above €0.40
20	5%	above €2.00
50	10%	above €10.00
100	15%	above €30.00
500	20%	above €200.00
1000	30%	above €600.00

### Product features

Material	Polyamide PA6 - glass fiber reinforced
Colour	Black
Type	Elbow
Mounting method	By plug, using a rubber hammer
Matching profile	50x30x2 mm
Number of axes	2
Number of slots	2
Core	Standard plastic connectors